

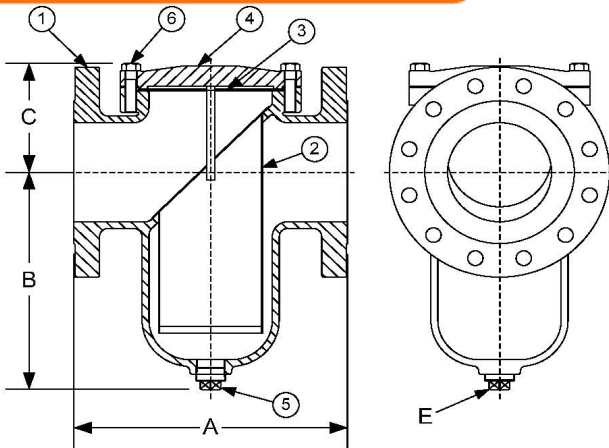
Click Here  
For Your Free Quote

**TECHNICAL DATA**  
DIMENSIONS AND WEIGHTS

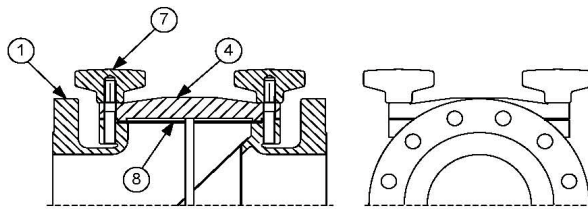
# Styles SGFV & SGFV-K

## Basket Strainer, Flanged

### Cast Carbon Steel (ASTM A 216, Grade WCB)



**Style SGFV - Bolted Cover (Shown Above)**  
Available in 150 lb. and 300 lb. Class



**Style SGFV-K - Knob Type Cover (Shown Above)**  
Only Available in 150 lb. Class

**PARTS LIST**

ITEM	DESCRIPTION	MATERIAL
1†	BODY	CAST CARBON STEEL (ASTM A 216, GRADE WCB)
2	BASKET	STAINLESS STEEL (304)
3	GASKET	SPIRAL WOUND STAINLESS STEEL (304)
4	COVER	CAST CARBON STEEL (ASTM 216, GRADE WCB)
5	PIPE PLUG	CARBON STEEL (ASTM A 105)
6	HEX HEAD CAP SCREW	CARBON STEEL (ASTM A 193, GRADE B7)
7*	KNOB	STEEL
8*	GASKET	BUNA-N (MAX TEMPERATURE 200°F)

\*Denotes parts for the Style SGFV-K 150 lb. Class only.

†Optional Body Materials Available in LCB, WC6, and WC9.

**STANDARD SCREENS SUPPLIED**

SIZE		SCREEN GAGE	SCREEN PERFORATION					
in	mm		FOR STEAM		OPEN AREA	FOR LIQUID		OPEN AREA
			in	mm		in	mm	
1-1/2 to 3	40 to 80	22	3/64	1.2	33%	1/16	1.6	30%
4 to 14	100 to 350	22	1/16	1.6	30%	1/8	3.2	43%

Standard screens supplied are for liquid service, unless otherwise specified.

Options: Other perforations, meshes, and screen materials are available.

SIZE	DIMENSIONS																	
			A				B				C				E			
			150#		300#		150#		300#		150#		300#		150#		300#	
in	mm	in	mm	in	mm	in	mm	in	mm	in	mm	in	mm	in	mm	in	mm	
1-1/2	40	6-1/2	165	7	178	4-1/2	114	4	102	4	102	3-3/4	95	1/2	15	1/2	15	
2	50	8-1/2	216	8-13/16	224	5-7/8	149	4-3/4	121	4-3/4	121	3-3/4	95	1/2	15	1	25	
2-1/2	65	8	203	9	229	5-7/16	138	5-5/8	143	4-1/4	108	4-5/8	117	3/4	20	1	25	
3	80	8-3/4	222	10-1/16	256	5-11/16	144	5-11/16	144	5-5/8	143	5-5/8	143	3/4	20	3/4	20	
4	100	11-3/16	284	12	305	8-1/4	210	8-1/4	210	6-1/16	154	6-1/16	154	1	25	1	25	
5	125	12-1/4	311	13-1/8	333	10-1/4	260	10-1/4	260	5-5/8	143	5-5/8	143	1	25	1	25	
6	150	13-7/8	352	15-9/16	395	12-13/64	310	12-13/64	310	6-5/16	160	6-5/16	160	1-1/4	32	1-1/4	32	
8	200	17-3/8	441	18-7/8	479	15-9/16	395	15-9/16	395	8-3/16	208	8-3/16	208	1-1/2	40	1-1/2	40	
10	250	22	559	21-5/16	541	16	406	14-3/8	365	10-3/8	264	9-7/8	251	1-1/2	40	2	50	
12	300	25	635	25-3/8	645	23-3/4	603	23-3/4	603	12-3/8	314	12-3/8	314	2	50	2	50	
14	350	34-5/16	871	34-5/16	871	28	711	34-3/8	873	16-1/2	419	20-3/16	513	2	50	2	50	

Larger sizes available upon request.

Certified dimensional drawings are available upon request.

**WEIGHTS**

Size	1-1/2"	2"	2-1/2"	3"	4"	5"	6"	8"	10"	12"	14"
150 lbs	22	30	35	39	69	110	125	270	360	450	1550
kgs	10	14	16	18	31	50	57	122	163	204	703
300 lbs	24	32	42	56	88	126	150	295	420	500	1650
kgs	11	15	19	25	40	57	68	134	191	227	748

**FLOW COEFFICIENTS**

Size	C <sub>v</sub>	Size	C <sub>v</sub>	Size	C <sub>v</sub>	Size	C <sub>v</sub>
1-1/2"	32	3"	120.2	6"	743.1	12"	4980.6
2"	42.7	4"	276.7	8"	1486.3	14"	7600.0
2-1/2"	84	5"	442.7	10"	3051.6		

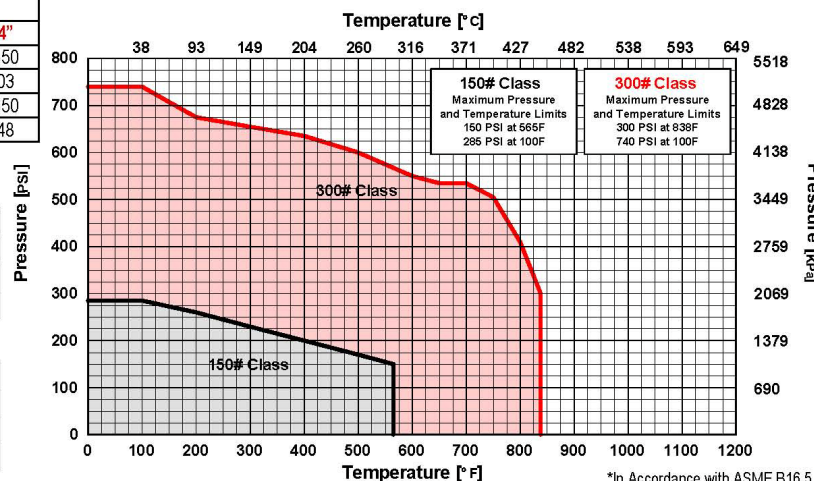
**TOTAL SCREEN AREA (150 LB.)**

Size	(in <sup>2</sup> )	Size	(in <sup>2</sup> )	Size	(in <sup>2</sup> )	Size	(in <sup>2</sup> )
1-1/2"	20.10	3"	54.53	6"	215.65	12"	1040.63
2"	53.42	4"	117.94	8"	401.76	14"	1200.0
2-1/2"	45.72	5"	129.0	10"	591.73		

\*See DETERMINING RATIOS on page S5 of the Strainer Information Section for calculating NET FREE AREA of the screen to inside pipe area.

**PRESSURE vs. TEMPERATURE CHART**

150# & 300# Flanged Cast Carbon Steel (ASTM A 216, Grade WCB)  
For use with Bolted Cover Only



\*In Accordance with ASME B16.5