

THIRD ANGLE PROJECTION

## SLOTTED ELEMENT SIZES

P/N	RETENTION	(MICRON)
45761	0.0006"	15
45762	0.001"	25
45763	0.002"	50
45764	0.003"	75
45765	0.004"	100
45766	0.006"	150
45769	0.007"	175
45788	0.008"	200
45767	0.009"	230
46260	0.015"	380
47338	0.024"	610
45768	0.030"	750
45770	0.045"	1125

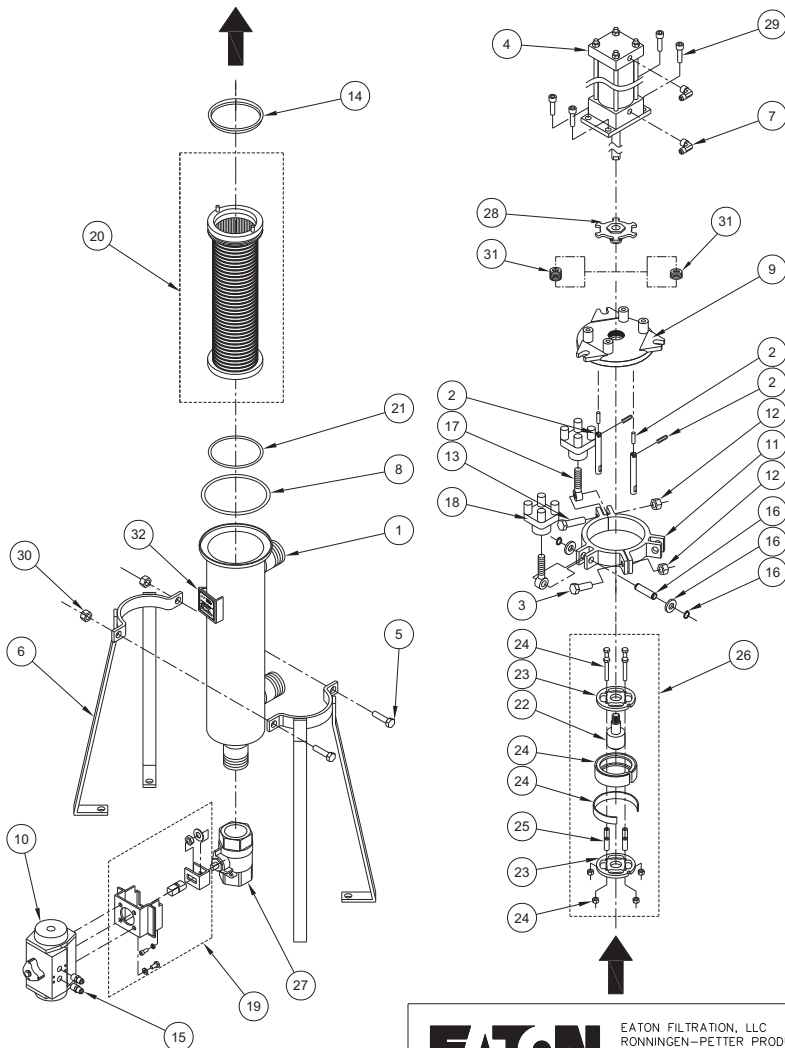
## PERFORATED ELEMENT SIZES

P/N	RETENTION
45758	0.062"
45759	0.125"
45760	0.250"

## CLEANING DISC

MATL	ASSY (#26)	REP KIT (#24)
UHMWPE	46725	46727
TFE	46728	46677
KYNAR	46729	46678

O-RINGS		SEALS	
MATL	LID (#8)	ELEMENT (#21)	ELEMENT (#14)
BUN	45626	45670	45625
VIT	45628	45671	45627
EPT	45630	45672	45629
TFE	45641	45673	45673



**QUICK & DISCOUNTED PRICING**  
**CLICK HERE**  
 OR CALL (908) 362-9981

32	1	60007	DCF SERIAL TAG BRACKET
31	1	45499	KIT, PACKING, VIT 5/8" X 1"
	1	42957	PKG, URE SP DCF-4/800 W/ INST
	1	42956	PKG, TFL VEE DCF-4/800 W/ INST
30	2	P-10859-CST	NUT, 1/2-13 X 5/16 THK HEX JAM
29	4	42848	SCREW, 5/16-18 X 1-1/4 HX HD
28	1	42902	GLAND, PACKING DCF-400 THREAD
27	1	45657	VALVE, B 2W 1-1/2" DCF-400/800
26	1	SEE CHART	DOCTOR ASSY, DCF-400 L2/3
25	4	46209	SPACER, DOCTOR DCF-400
24	1	SEE CHART	KIT, DCTR REPAIR, DCF-400 L1-3
23	2	46206	PLATE, DOCTOR DCF-400 "V"
22	1	42925	ADAPTOR, DOCTOR DCF-4/800 L2/3
21	1	SEE CHART	O-RING, ELMT, DCF-400
20	1	SEE CHARTS	ELEMENT, DCF-400
19	1	45675	KIT, MGT 1-1/2" BV TO ACT
18	3	AM-30129-SS4	NUT, FB FILTER
17	3	45558	EYEBOLT, 1/2" DCF-400/800 LID
16	2	45711	WASHER, 1/2"FLAT TYPE A SER N
			PIN, EYEBOLT 1/2"
			RING, RETAINER 3100-50-SS2
15	2	P-20760-BRZ	ADAPTOR, 1/4" NPT X 45 FLARE
14	1	SEE CHART	ELEMENT SEAL/O-RING
13	1	P-10929-CST	BOLT, 1/2-13 X 1-3/4 HEX HD
12	2	45592	NUT, 1/2-13 FLEX-LOC
11	2	45521	RING, HALF, DCF-400
10	1	45661	ACTUATOR/R/P 200 LB-IN @ 60 PSI
9	1	42916	LID, MACH DCF-400 L2/3 "V"
8	1	SEE CHART	O-RING, LID DCF-400
7	2	P-20763-BRZ	ELBOW, 3/8 NPTE 45 FLARE 90 DEG
6	2	45649	LEG ASSY, HALF 4" BODY
5	2	P-43853-CST	SCREW, 1/2-13 X 1-1/2 HEX HD G5
4	1	46689	ACTUATOR, 2-1/2"X11 -1/2ST VITON
3	1	P-10857-CST	SCREW, 1/2-13 X 1 HEX HD
2	2	45722	KIT, REPLACE COMP BAR DCF-400
1	1	45519	BODY ASSY, W/ NIPPLE DCF-400
DWG REF	QTY	PART NUMBER	PART DESCRIPTION

## NOTES:

- ITEM # 26 CONTAINS ITEMS 22-25.
- REPAIR KIT FOR #4 - 46723 (VITON)  
#10 - 45663
- ITEM #24 CONTAINS: (1) CLEANING DISC  
(1) SPRING  
(4) SCREWS  
(4) NUTS

# EATON

EATON FILTRATION, LLC  
 RONNINGEN-PETTER PRODUCTS  
 9151 SHAVER ROAD  
 PORTAGE, MICHIGAN 49024-6798 USA

THIS DRAWING AND ALL INFORMATION THEREON IS THE PROPERTY OF EATON CORPORATION. IT IS CONFIDENTIAL AND MUST NOT BE MADE PUBLIC. THIS DRAWING IS LOANED SUBJECT TO RETURN ON DEMAND, AND IS NOT TO BE USED DIRECTLY OR INDIRECTLY, IN ANY WAY DETRIMENTAL TO THE INTERESTS OF EATON FILTRATION, LLC.

ENGINEERING APPROVAL

SALES/MKTG APPROVAL

DRAWN BY

M. DESJARDINS

SCALE

NONE

ENGINEERING SPECIFICATION

TITLE

DCF-400 SINGLE FILTER  
 REPLACEMENT PARTS

DATE

05/16/05

SIZE

A

DWG FILENAME

DCF-400-SNG-PA001

REV

A